

Labyrinth Wallpaper



Labyrinth Wallpaper

Labyrinth wallpaper is a bold and stylish exploration of contemporary geometric design. The simple patterns, all of which share a common structure, are brought to life with a carefully considered family of colour.

The clean, simple lines of each labyrinth design create a sense of order and calm, making it an ideal choice for any space. The collection is available in a range of neutral and jewel bright colours. Whether you're looking to add a touch of contemporary elegance to your project or simply want to create a more relaxing atmosphere, the labyrinth wallpaper collection is sure to meet your needs.





Box





Royal Fox
LWBXRF



Winter Blue
LWBXWB



Vibration
LWBXVI



Tan
LWBXTA



Ginger
LWBXGI



Citrine Blush
LWBXCB



Labyrinth Box is a geometric design that is based on closed loops. It is related to the classic maze, but it is typically much simpler in design. The basic idea is to create a series of paths that wind around in a looping pattern, with no dead ends or branching points. The clean lines and geometric shape of the labyrinth box make it a versatile and stylish option for any home or office. Regardless of the intended use, this design is sure to add interest to any space.

Dimensions

Roll Width: 52cm

Roll Length: 1000cm

Repeat: 45 cm

Match: Straight

Maze





Malachite
LWMZMA



Citrine Blush
LWMZCB



Tan
LWMZTA



Ginger
LWMZGI



Ruby
LWMZRU



Royal Fox
LWMZRF



Labyrinth Maze has open winding pathways, easily traced by the eye. Unlike a traditional maze, this design has no dead ends or wrong turns. This design has many pathways defined with clean, broken lines. Labyrinth Maze combines multiple pathways branching off from one another that create a more complex overall design. No matter how it is used, this design is sure to add visual interest to any space.

Dimensions

Roll Width: 52cm
Roll Length: 1000cm
Repeat: 45 cm
Match: Straight

Forward





Malachite
LWFWMA



Winter Blue
LWFWWB



Blueberry
LWFWBL



Tan
LWFWTA



Vibration
LWFWVI



Royal Fox
LWFWRF

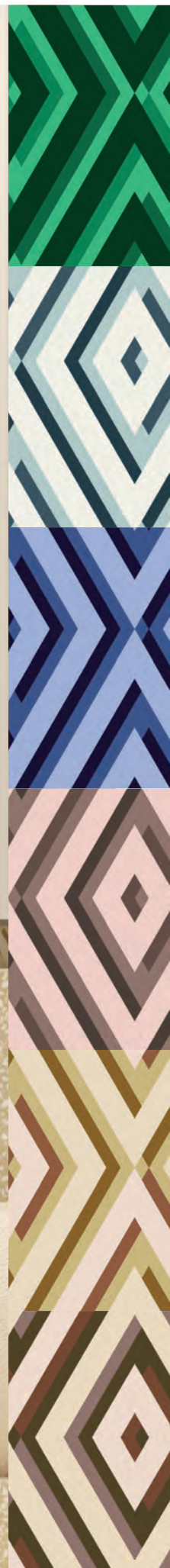


Labyrinth Forward is a rhythmic pattern arranged in ordered rows. The clean, simple slash lines of the design create a modern look that is easy for the eye to follow. The ordered rows make it easy to keep track of your progress and find your way out of the labyrinth. The geometric lines add visual interest, while the rhythmic rows create a sense of order and calm. Whether you use it as a feature or field, Labyrinth Forward is a clean and simple way to add style to your space.

Dimensions

Roll Width: 52cm
Roll Length: 1000cm
Repeat: 45 cm
Match: Straight

Diamond





Malachite
LWDIMA



Winter Blue
LWDIWB



Blueberry
LWDIBL



Tan
LWDITA



Ginger
LWDIGI



Citrine Blush
LWDICB

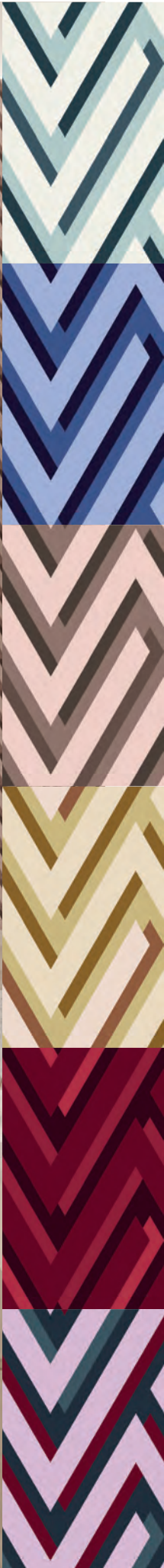


Labyrinth Diamond is a geometric pattern that features closed diamond shapes. This design is clean and simple, making it a popular choice for modern homes. Labyrinth Diamond can be used to create a variety of different looks. Understated yet eye-catching, Labyrinth Diamond is an ideal choice for adding a touch of geometric interest to a space without overwhelming the overall look.

Dimensions

Roll Width: 52cm
Roll Length: 1000cm
Repeat: 45 cm
Match: Straight

Spear





Winter Blue
LWSPWB



Blueberry
LWSPBL



Tan
LWSPTA



Ginger
LWSPGI



Ruby
LWSPRU



Vibration
LWSPVI



Labyrinth Spear is a design that features closed arrow heads in opposing directions. This modern design is both stylish and functional, and it can be used to great effect in a variety of settings. Labyrinth Spear is an excellent choice for those looking for a unique and stylish way to add symmetrical pattern to their space. Whether you use it as a focal point in your decor or as a complete background, Labyrinth Spear is sure to make an impression.

Dimensions

Roll Width: 52cm
Roll Length: 1000cm
Repeat: 45 cm
Match: Straight

Frequency





Malachite
LWFQMA



Winter Blue
LWFQWB



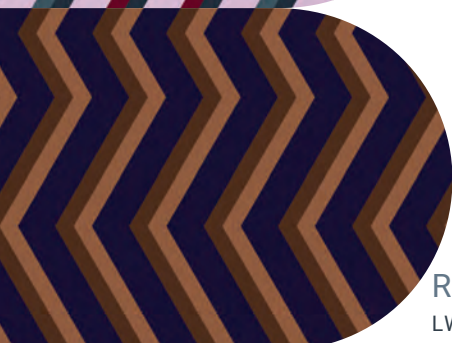
Blueberry
LWFQBL



Ginger
LWFQGI



Vibration
LWFQVI



Royal Fox
LWFQRF



Labyrinth Frequency is a geometric pattern built of parallel, simple lines arranged in ordered rows. Zigzag lines are an easy geometric configuration often seen in modern art and architecture and can create a feeling of movement or energy. The lines of Labyrinth Frequency can help to create a sense of order and calm. The symmetry and geometry of the pattern creates a modern look that is both visually appealing and functional.

Dimensions

Roll Width: 52cm
Roll Length: 1000cm
Repeat: 45 cm
Match: Straight

Weave





Winter Blue
LWWVWB



Royal Fox
LWWVRF



Citrine Blush
LWWVCB



Ginger
LWWVGI



Ruby
LWWVRU



Vibration
LWWVVI



Labyrinth Weave features clean and simple rows that resemble oversized stitches. This modern pattern is perfect for adding pattern with an understated look. The beauty of Labyrinth Weave lies in its simplicity, and it can be easily adapted to a variety of settings. Whether you're looking for a vivid statement piece or a subtle way to add modernity to your space, Labyrinth Weave is a versatile option.

Dimensions

Roll Width: 52cm
Roll Length: 1000cm
Repeat: 45 cm
Match: Straight

Technical & Characteristics

Wallpaper

All wallpapers are printed on non-woven wall covering stock. These are made with natural fibres sources from FSC approved supply. Non-woven coverings are produced wet-laid opposed to chemical or dry spun methods.

Non-woven papers are a heavier weight than standard paper stock. This results in them being more robust, making them easier to cut when wet. They are also easier to install and remove from the wall. The additional thickness of this type of wallcovering is butt jointed on the wall making seams that do not separate.



Ink

Wallcoverings are printed exclusively with HP digital print technology. HP water based, environmentally kind inks are durable and colour fast. HP latex inks are free from Cadmium, Chromium, Mercury, Lead (tested to >0.2ppm) or Formaldehyde.

HP water based environmentally kind inks offer durability to withstand “wear and tear” from the different sources of potential damage to which luxury wallpapers may be exposed.

HP Latex Inks have qualified for certifications that demonstrate they meet some of the world’s most rigorous and comprehensive standards for low chemical emissions into indoor air. Meeting stringent health and environmental criteria. HP Latex Inks are UL ECOLOGO® certified⁵, conform to ZDHC Manufacturing Restricted Substances List⁶, and comply with toy safety requirements.

Printing

Stuart Rodgers wallpapers are digitally printed on demand in the UK. Using this method removes the requirement to over produce for stock and keeps waste in the production process to a minimum. There are no ‘wet’ production processes to make screens or to etch plates, avoiding chemical and solvent use. With cutting edge print technology, energy resources are optimised to their most efficient, so there is very little between the digital artwork and the finished product.

Pasting & Hanging

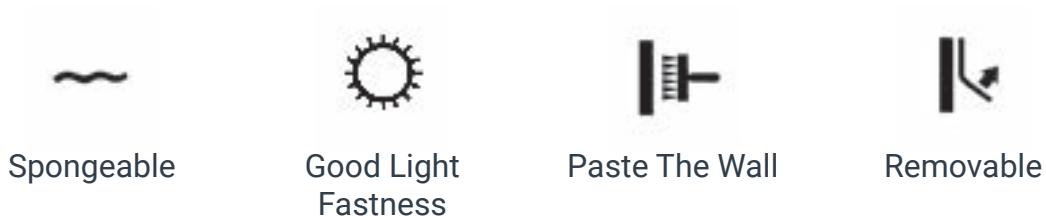
Walls should be dry, clean, and even. Remove any old wallpaper and loose paint. Roughen painted surfaces with sandpaper.

For best results, walls should be cross lined using a good quality lining paper. Sizing the lining paper will aid adhesion. Lining should be allowed to dry out completely before hanging the wall covering.

This is a paste the wall product. The decorator should paste the wall and not the back of the wall covering. A good quality, solvent free, fungicide protected ready-mixed 'tub' adhesive – specifically for paste the wall non-woven papers should be used. Paste should be evenly applied to the wall to hang one length at a time, to an area slightly wider than width of the paper.

Crayon the edges of dark wallcoverings prior to unrolling using a good quality painting crayon, matching as close as possible to the surface colour on the trimmed edges. Butt joints and use a decorator's brush to smooth down the wall covering, working from the centre to the edges to express air bubbles. Avoid squeezing paste out of the joints and ensure paste does not get onto the brush or roller.

No paste should be allowed to come into contact with the surface and hands should be kept clean and dry whilst hanging the wall covering. Paste will damage the surface. Should any paste have been allowed to come into contact with the surface, it should be lightly sponged whilst still moist, using a clean damp sponge. We cannot accept responsibility for marks or damage caused by paste.



Areas of Use

Our wallpapers are suited to most environments including applications in bathrooms and kitchens. For additional peace of mind apply a wallpaper varnish such as Polyvine decorators' varnish. Always test before application as it may affect printed colours

Wallpaper Care

All wallcoverings are printed on coated non-woven material. These will withstand dusting with a soft dry cloth. A damp sponge may be used to carefully remove more stubborn marking.

Weights & Measures

Roll Length	10 metres
Roll Wdth	52 centimeters
Roll Weight	0.8 kilogrammes
Material	Non-Woven Matt Coated Wallcovering
Repeat	45 centimeters - all designs
Pattern Match	Straight



Stuart Rodgers
www.stuartrodgers.co.uk